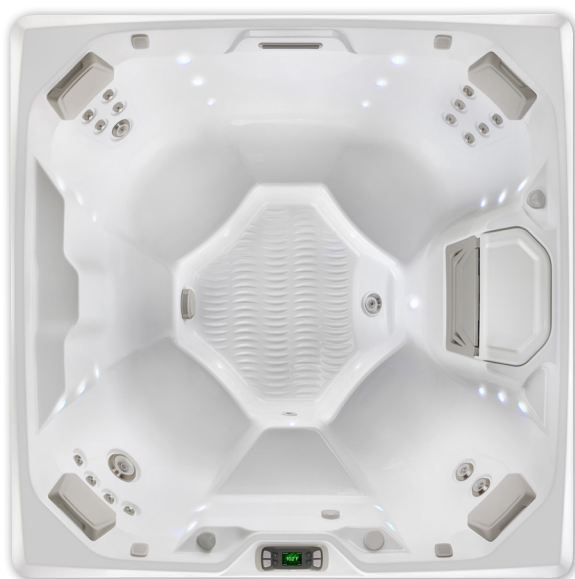


# BEAM™



Beam shown with Alpine White shell



Beam shown with Alpine White shell & Sable cabinet

|  |   |
|--|---|
| <b>Seating Capacity</b>                            | 4 adults  |
| <b>Dimensions</b>                                  | 203 x 203 x 84 cm   |
| <b>Water Capacity</b>                              | 1,115 litres  |
| <b>Weight</b>                                      | 320 kg dry; 1,755 kg filled*  |
| <b>Spa Shell Colours</b>                           | Alpine White, Ice Grey, Platinum, Tuscan Sun or Desert  |
| <b>Cabinet Finishes</b>                            | Coastal Grey, Espresso or Sable   |
| <b>Jets - 19 (w/ Brushed Stainless Steel Trim)</b> | 1 XL Directional jet<br>2 Standard Single Rotary jets<br>2 Standard Directional jets<br>14 Directional Precision jets                         |
| <b>Water Feature</b>                               | Vidro™ backlit ribbon waterfall   |
| <b>Water Care System (Optional)</b>                | FreshWater® Salt System   |
| <b>Jet Pump</b>                                    | Wavemaster™ 9000 One-Speed 2.5 HP continuous duty, 5.2 HP breakdown torque  |
| <b>Circulation Pump</b>                            | SilentFlo 5000™ for quiet, continuous filtration  |
| <b>Effective Filtration Area</b>                   | 9.3 m <sup>2</sup> , top-loading filters  |
| <b>Control System</b>                              | IQ 2020™ with LCD control panel 240v/16amp, 50Hz  |
| <b>Lighting System</b>                             | Raio™ multi-colour interior points of light (30)<br>Exterior multi-colour lighting with timer   |
| <b>Heater</b>                                      | No-Fault™ 1500w/240v  |
| <b>Energy Efficiency</b>                           | FiberCor® insulation; Certified to the APSP 14 National Standard and the California Energy Commission (CEC) in accordance with California law |
| <b>Vinyl Cover</b>                                 | 9 to 6 cm tapered, 32 kg/m <sup>3</sup> density foam core, with hinge seal in Caramel, Chestnut, or Slate                                     |
| <b>Cover Lifter (Optional)</b>                     | CoverCradle™, CoverCradle II, Lift 'n Glide™ or UpRite™   |
| <b>Steps (Optional)</b>                            | Everwood™ or Polymer  |
| <b>Entertainment System (Optional)</b>             | Wireless Entertainment<br>22" HD Monitor  |

\* Includes water and 4 adults weighing 80 kg each